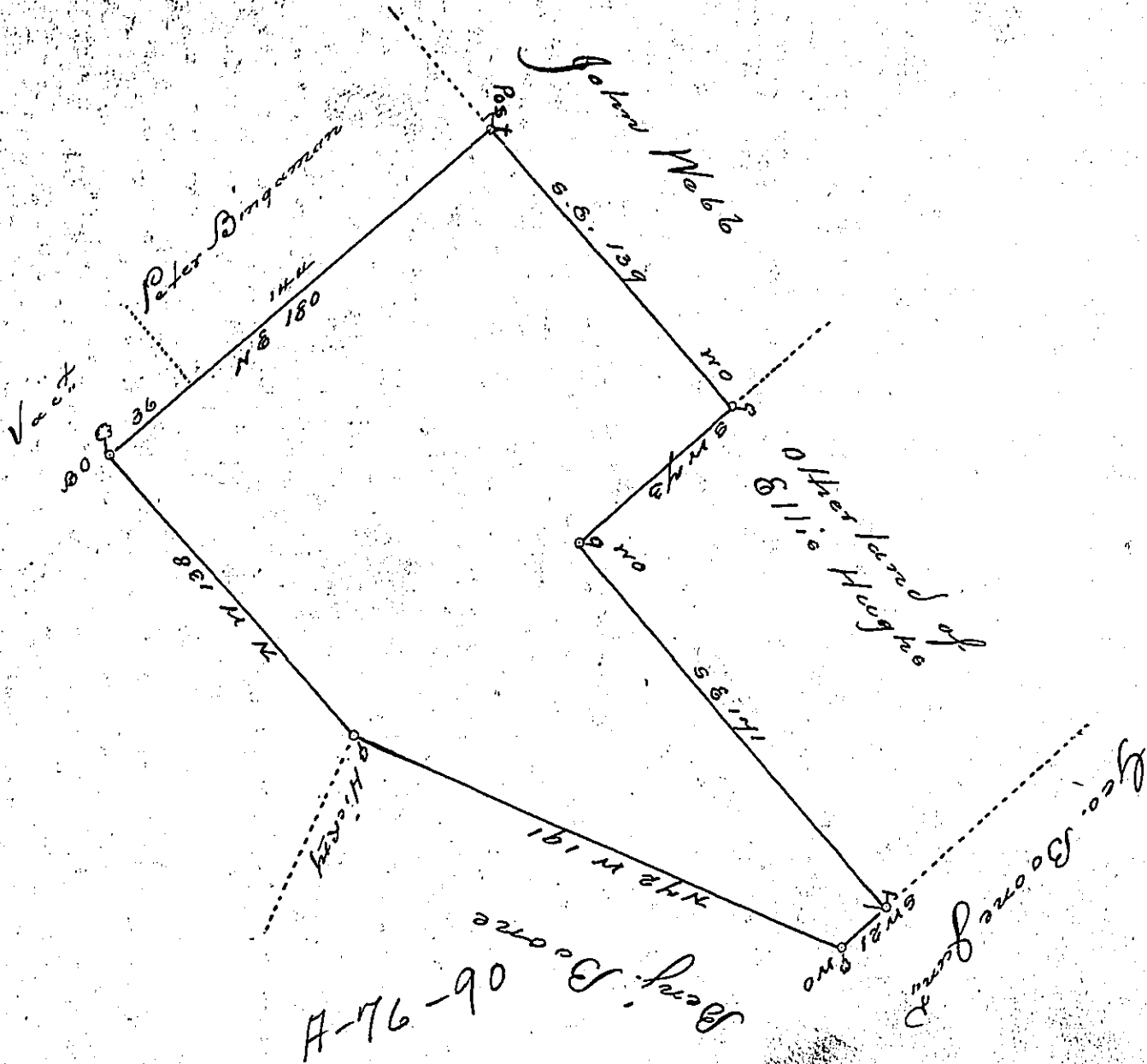


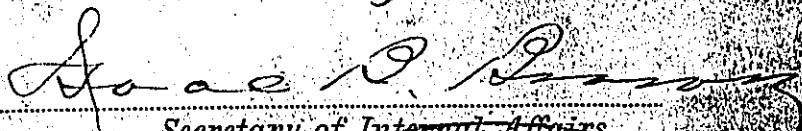
C-67-289



Surveyed on the seventh day of February, 1833, to Ellis Hughes a tract of land situated in Oley in the County of Philad^a. Beginning at a White Oak a corner of John We 66's land, thence by other land of J^r Ellis Hughes south west seventy three perches to a White Oak, thence by J^r Hughes land south east one hundred seventy one perches to a post, thence by land of George Boone Jun^r south west twenty one perches to a white Oak, thence by land of Benjamin Boone North seventy two degrees west one hundred and ninety one perches to a hickory a corner of Bⁿ Benjamin Boone's land, thence by Vacant land North West one hundred and thirty eight perches to a Black Oak, thence by Vacant land North East thirty six perches, and by land of Peter Bingham of same course one hundred & forty four perches to a post in the line of John We 66's land thence by of same South East one hundred and thirty nine perches to J^r place of Beginning, containing Two hundred and twelve acres, with usual allowances. Witness from the Proprietaries date the 31st of the 11th Mo^o 1834

Nich^o Scull

IN TESTIMONY that the above is a copy of the original remaining on file in the Department of Internal Affairs of Pennsylvania, made conformably to an Act of Assembly approved the 16th day of February, 1833, I have hereunto set my Hand and caused the Seal of said Department to be affixed at Harrisburg, this ninth day of February, 1905,


 Secretary of Internal Affairs